



Gasoline

CC190XL-EE Early Entry Saw

14" Blade Capacity

Self Propelled Drive



Features & Benefits

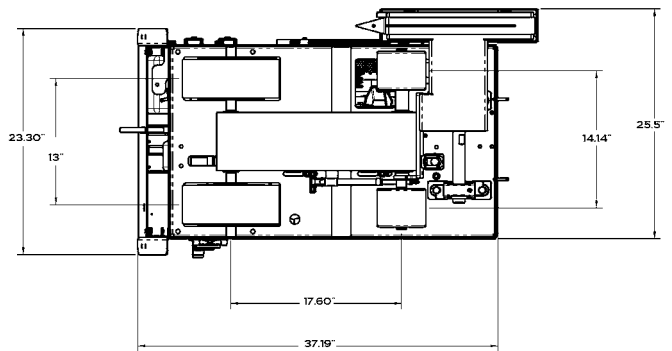
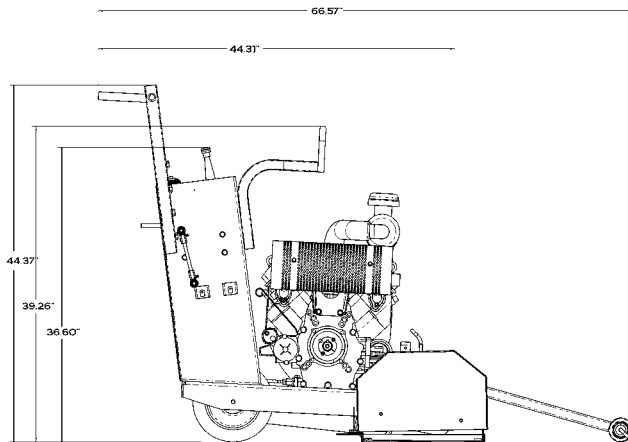
- Spring loaded skid plate that keeps it down on the surface
- Maximum cutting depth of 3" with 14" blade
- Capable of .110" to .250" thick blades
- Heavy duty handle design
- Self aligning blade shaft bearings
- Handles can be pointed in or out for operator ease and comfort
- Easy access to battery with heavy duty battery isolator switch to prevent battery drain
- Upcut design to keep slurry from going back in the cut
- Lifting hook for easy transport

Specifications

Blade shaft RPM:	3,500
Blade shaft diameter:	1-1/4"
Arbor size:	1" with single drive pin
Blade raise/lower:	Electric actuator
Transmission:	Eaton Model 6
Drive Speed:	0-80 feet per minute
Handle bars:	Adjustable
Includes:	Electric start, low oil alert and tach/hour meter

CC190XL-EE EARLY ENTRY SAW

Model #	Engine Make/ Model	Engine Power	Power Source	Part #	Cat #	Blade Capacity	Product Weight (lbs)
CC190HXL-EE	Honda GX630	20.8 HP, 35.6 Torque (lbs.-ft)	Gas	5801038	01142	14"	420



Sawing